

Use buttons for quick navigation

consultation



Experience

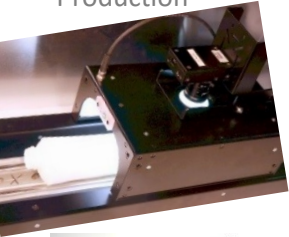


Development



Experimental laboratory

Production



>> LED lighting systems for industrial image processing (from page 2)

>> LED lighting for visual inspection (from page 23)

>> LED machine lighting and machine spots (from page 30)

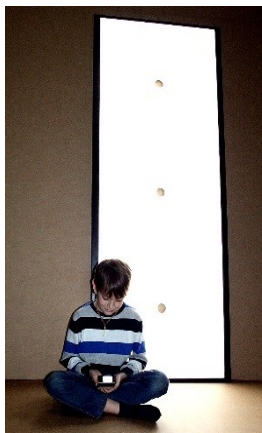
Documentation



Service



Quality



planistar Lichttechnik GmbH

Wiesenweg 4, 97267 Himmelstadt

Your partner for high quality LED-systems






(exclusively using for the commercial sector), stand 1.4.2022



including prices and links to data sheets and drawings

Solutions for **backlight applications** (or top lighting without breakthrough)

LED panels with edge-light-systems for backlight applications

<p>Sled-1-VD page 3</p> 	<p>Sled-2-VD page 4</p> 	<p>Sled-3-VDC page 5</p> 	<p>Sled-2-Flat-VD page 6</p> 	<p>Xled-3-VD page 7</p> 
--	---	--	--	---

Other lighting for backlight applications


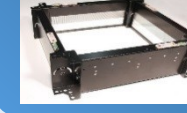







<p>Bar lighting page 8</p> 	<p>lightsabre page 9</p> 	<p>Use buttons for quick navigation</p>
---	--	---

Solutions for **toplight applications**

LED panels with edge-light-systems for toplight applications

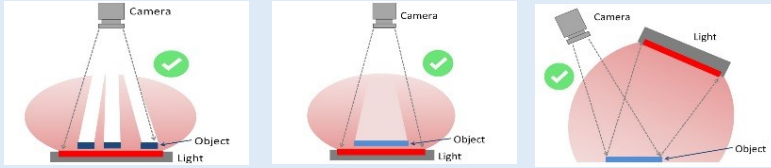
<p>Sled-1-VA page 10</p> 	<p>Sled-2-VA page 11</p> 	<p>Sled-3-VAC page 12</p> 	<p>Sled-2-Flat-VA page 13</p> 	<p>Xled-3-VA page 14</p> 
---	--	---	--	--

Other lighting for backlight applications

<p>lighttunnel page 15</p> 	<p>Dark field page 16</p> 	<p>Coaxial light page 17</p> 	<p>focusor page 18</p> 	
<p>bar lighting page 19</p> 	<p>line lighting page 20</p> 	<p>LED spots page 21</p> 	<p>IR 850 nm</p> 	<p>ESD lighting</p> 

Customized solutions from planistar (page 22)

Sled-1-VD backlight illumination (or top lighting without camera breakthrough)



- ✓ designed for 24-hour operation
- ✓ non external controller necessary
- ✓ internal single control system for high life time
- ✓ good price-performance
- ✓ custom-specific adjustments are possible

Use buttons for quick navigation

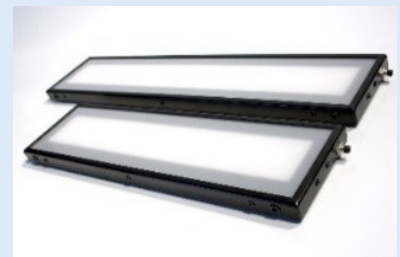
datasheet pdf.	drawing pdf. / step.	Model order code (in light colour white)	lighting area mm	overall size approx. mm	light intensity approx. lx	price € / piece
		15-15-Sled-1-VD2-18w	150 x 150	200 x 190 x 20	25.000	380,00
		20-30-Sled-1-VD2-18w	200 x 300	250 x 340 x 20	25.000	725,00
		30-40-Sled-1-VD2-18w	300 x 400	350 x 440 x 20	18.000	980,00
		50-50-Sled-1-VD2-18w	500 x 500	580 x 540 x 20	11.000	1340,00
		80-80-Sled-1-VD2-18w	800 x 800	880 x 840 x 20	6.000	1820,00

possible light colours: -18w (white), -20r (red), -21b (blue), -22g (green), -23a (amber)

Assembled according to customers specifications:

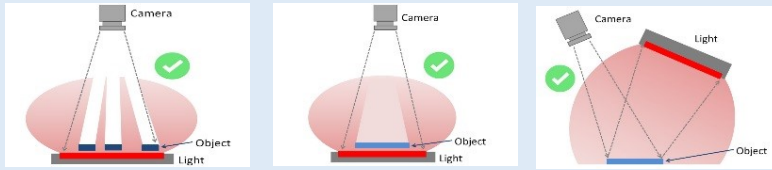
We designed our development and production structures to cater for non-standard requirements to produce. Please consult us with your application:

+49 (0) 9364 8060-0
 sales@planistar.de

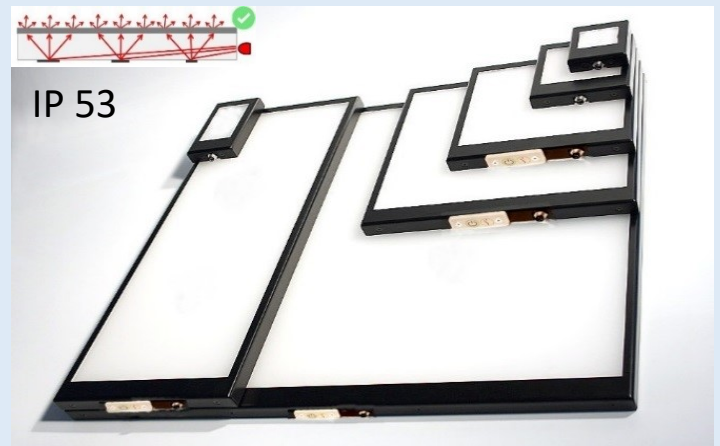




Sled-2-VD backlight illumination (or top lighting without camera breakthrough)



- ✓ designed for 24 hour operation
- ✓ **small frame with 9 mm on two sides**
- ✓ none external controller necessary
- ✓ internal single control system for high life time
- ✓ from size 16-16 with **integrated optocoupler**
- ✓ custom-specific adjustments are possible



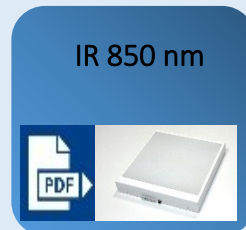
datasheet pdf.	drawing pdf. / step.	model order code (in light colour white)	lighting area mm	overall size approx. mm	light intensity approx. lx	price € / piece
		4-4-Sled-2-VD-16w	40 x 40	58 x 80 x 20	10.000	280,00
		4-8-Sled-2-VD-16w	40 x 80	58 x 120 x 20	13.000	315,00
		8-8-Sled-2-VD-16w	80 x 80	98 x 120 x 20	20.000	360,00
From here with integrated optocoupler and operating display:						
		16-16-Sled-2-VD-19w-O	160 x 160	178 x 200 x 20	55.000	506,00
		24-24-Sled-2-VD-19w-O	240 x 240	258 x 280 x 20	40.000	755,00
		16-48-Sled-2-VD-19w-O	160 x 480	178 x 520 x 20	60.000	1100,00
		48-48-Sled-2-VD-19w-O	480 x 480	498 x 520 x 20	20.000	1520,00
		78-78-Sled-2-VD-19w-O	780 x 780	860 x 840 x 20	11.000	2300,00

Possible light colours: -16w/-19w (white), **-20r (red)**, **-21b (blue)**, **-22g (green)**, **-23a (amber)**
 or with IR 850 nm -25ir (housing white and height of 50 mm)

Assembled according to customers specifications:

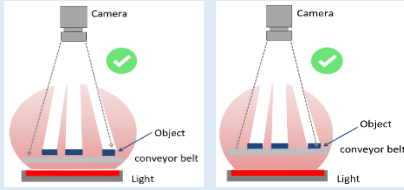
We designed our development and production structures to cater for non-standard requirement to produce. Please consult us with your application:

+49 (0) 9364 8060-0
sales@planistar.de

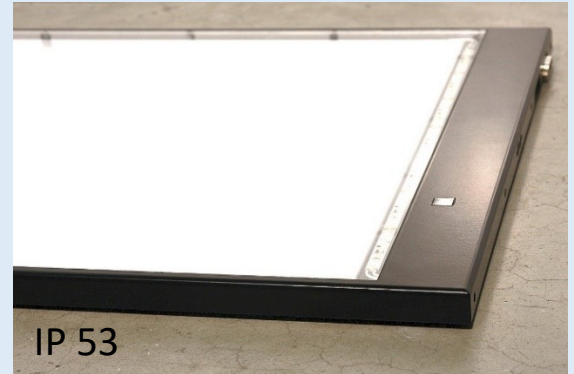
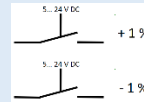
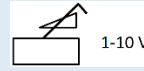
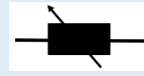




Sled-3-VDC (with cosine-correction) for backlight illumination



Cosine correction by:
 - internal Poti on the housing
 - analogous input 1-10 V
 - digital input +1%, -1%



- ✓ Backlight illumination for lower belt assembly
- ✓ Incl. cosine-correction due the distance between the band and lights
- ✓ strength of the cosine-correction adjustable
- ✓ clear front sheet
- ✓ with integrated switch input
- ✓ custom-specific adjustments are possible

datasheet pdf.	drawing pdf. / step.	Model order code (in lightcolour white)	lighting area mm	overall size approx. mm	light intensity approx. lx	price € / piece
with integrated optocoupler and operating display:						
		48-48-Sled-3-VDC-19w-18w-O-KD	480 x 480	498 x 520 x 20	20.000	1820,00
		78-78-Sled-3-VDC-19w-18w-O-KD	780 x 780	860 x 840 x 20	11.000	2760,00

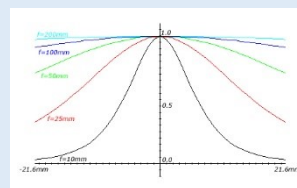
Possible light colours: -19w (white), other light colours on request

Information about the cosine correction

What is Cosine-correction?

The „law of cos⁴“ describes the natural fall in light from the center to the edge. By using a lens, the brightness will be reduced from the middle to the edge by the factor cos⁴ α. The brightness B (α) depends on the viewing angle of the camera

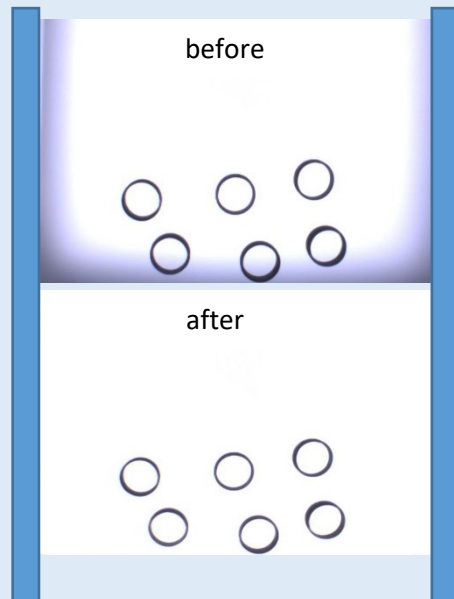
$$B(\alpha) = B_0 \cdot \cos^4 \alpha$$



Usually, the backlights are used under a conveyor belt with a distance of 2-10 cm. In this case the fall in light increase with distance.

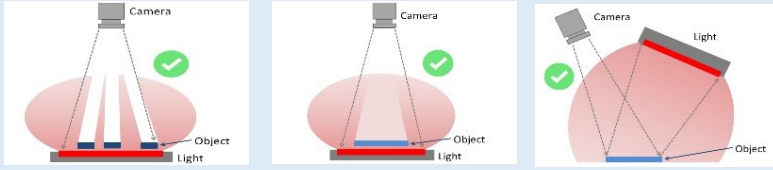
The natural fall in light will be balanced by the cosine-correction from planistar. With the adjustable correction, the parts will be clearly recognized over the complete surface.

Also customized sizes possible.

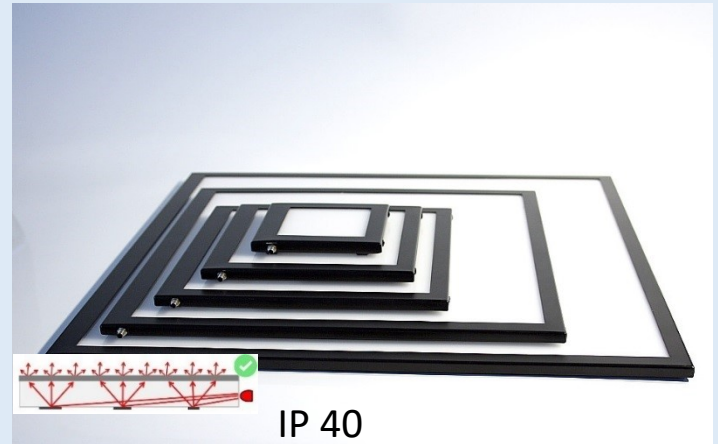




Sled-2-Flat-VD backlight illumination (or top lighting without camera breakthrough)



- ✓ designed for 24-hour operation
- ✓ flat design with only height of 11 mm
- ✓ none external controller necessary
- ✓ internal single control systems for high life time
- ✓ custom-specific adjustments are possible



datasheet pdf.	drawing pdf. / step.	model order code (in light colour white)	lighting area mm	overall size approx. mm	light intensity approx. lx	price € / piece
		7,5-7,5-Sled-2-Flat-VD-16w	75 x 75	105 x 110 x 11	40.000	470,00
		14-14-Sled-2-Flat-VD-16w	140 x 140	170 x 175 x 11	23.000	650,00
		20-20-Sled-2-Flat-VD-16w	200 x 200	230 x 235 x 11	20.000	775,00
		32,5-32,5-Sled-2-Flat-VD-16w	325 x 325	355 x 360 x 11	10.000	1090,00
		45-45-Sled-2-Flat-VD-16w	450 x 450	480 x 485 x 11	7.500	1480,00

Possible light colours: -16w (white)

Assembled according to customers specifications:

We designed our development and production structure to cater for non-standard requirements to produce. Please consult us with your application:

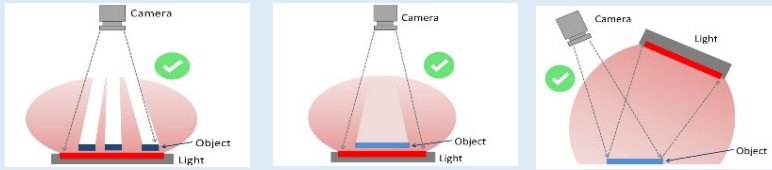
+49 (0) 9364 8060-0

sales@planistar.de

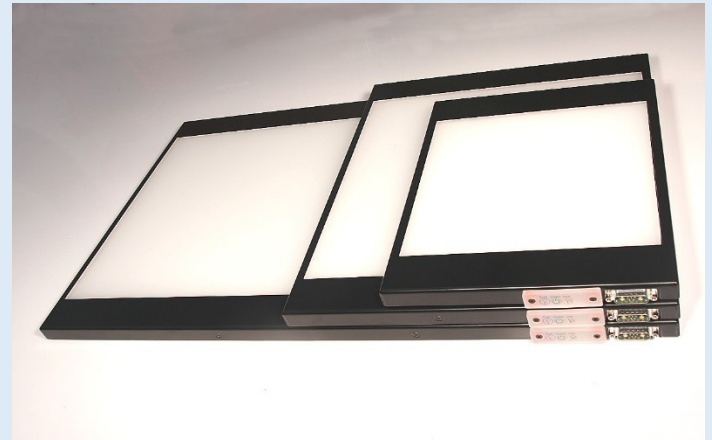




Xled-3-VD backlight illumination (or top lighting without camera breakthrough)



- ✔ **for steady and flashing mode**
- ✔ **small frame with 10 mm on two sides**
- ✔ internal microprocessor controlled
- ✔ impulse – pause - monitoring
- ✔ from size 22-22 with **1-10 V interface for brightness control**
- ✔ custom-specific adjustments are possible



datasheet pdf.	drawing pdf. / step.	Model order code (in lightcolour white)	lighting area mm	overall size approx. mm	light intensity approx steady / flash lx	price € / piece	
With switching inputs for steady and flashing mode:							
			7-7-Xled-3-VD-46w	70 x 70	210 x 90 x 21	75.000 / 300.000	560,00
			7-12-Xled-3-VD-46w	70 x 120	180 x 140 x 21	65.000 / 260.000	665,00
			7-22-Xled-3-VD-46w	70 x 220	155 x 240 x 21	110.000 / 440.000	920,00
			12-12-Xled-3-VD-46w	120 x 120	230 x 140 x 21	95.000 / 380.000	765,00
With switching inputs and 1-10 V interface for steady and flashing mode:							
			22-22-Xled-3-VD-46w	220 x 220	310 x 240 x 21	60.000 / 240.000	1180,00
			32-32-Xled-3-VD-46w	320 x 320	410 x 340 x 21	30.000 / 110.000	1525,00
			32-62-Xled-3-VD-46w	320 x 620	410 x 640 x 21	30.000 / 110.000	2360,00
			82-82-Xled-3-VD-46w	820 x 820	910 x 840 x 21	18.000 / 65.000	3590,00

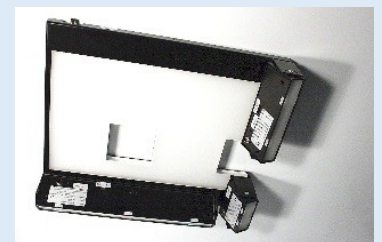
Possible light colours: -46w (white), **-47r (red)**

Assembled according to customers specifications:

We designed our development and production structure to cater for non-standard requirements to produce. Please consult us with your application:

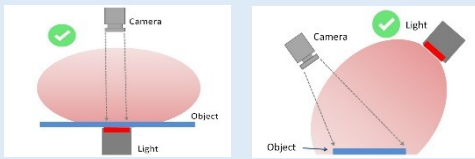
+49 (0) 9364 8060-0

sales@planistar.de





diffuse bar lights for backlight illumination and top light applications



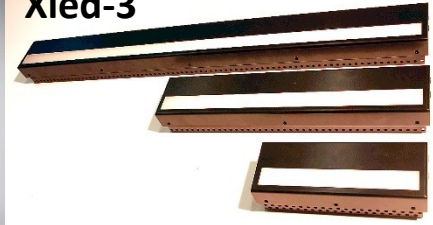
- ✓ Sled-3 for steady mode
- ✓ Xled-3 for steady and flashing mode
- ✓ Internal high-gloss reflectors
- ✓ segmented current control
- ✓ none external controller necessary
- ✓ custom-specific adjustments are possible

Sled-3

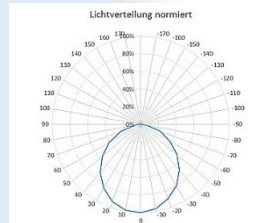


IP 40

Xled-3



IP 53



datasheet pdf.	drawing pdf. / step.	model order code (with light colour white)	lighting area mm	overall size approx. mm	light intensity steady / flash approx. lx	price € / piece	
for steady mode with integrated optocoupler and operating display:							
			11-Sled-3-BD-19w-O	110 x 24	170 x 29 x 60	160.000 / ----	320,00
			43-Sled-3-BD-19w-O	430 x 24	495 x 29 x 60	160.000 / ----	520,00
			87-Sled-3-BD-19w-O	870 x 24	935 x 29 x 60	170.000 / ----	665,00
			147-Sled-3-BD-19w-O	1470 x 24	1535 x 29 x 60	170.000 / ----	1035,00
With switching inputs for steady and flashing mode and 1-10 V interface:							
			20-Xled-3-BD-46w	200 x 27	220 x 80 x 55	450.000 / 1,2 Mio.	590,00
			40-Xled-3-BD-46w	400 x 27	420 x 80 x 55	450.000 / 1,2 Mio.	890,00
			80-Xled-3-BD-46-w	800 x 27	820 x 80 x 55	450.000 / 1,2 Mio.	1585,00
			140-Xled-3-BD-46-w	1400 x 27	1420 x 80 x 55	450.000 / 1,2 Mio.	2460,00

Possible light colours: by Sled-3: -19w (white), -20r (red), -21b (blue), -22g (green), -23a (amber), -27rgbw (red,green,blue,white)
by Xled-3: -46w (white), -47r (red)

Assembled according to customers specifications:

We designed our development and production structure to cater for non-standard requirements to produce.

Please consult us with your application:



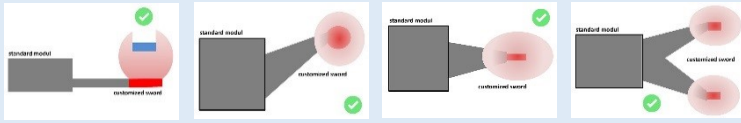
+49 (0) 9364 8060-0



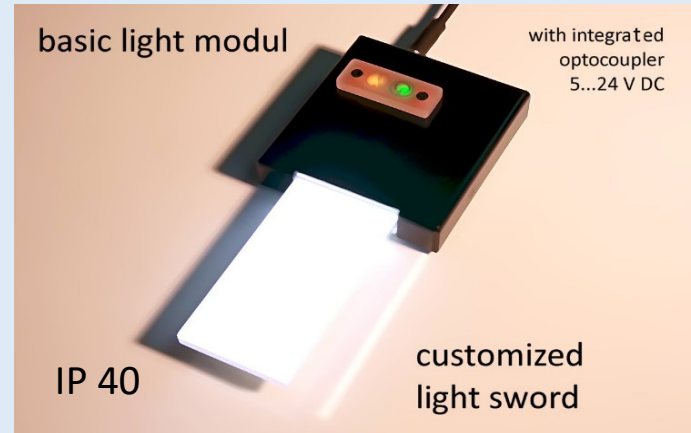
sales@planistar.de



Lightsabre for everywhere where it's tight



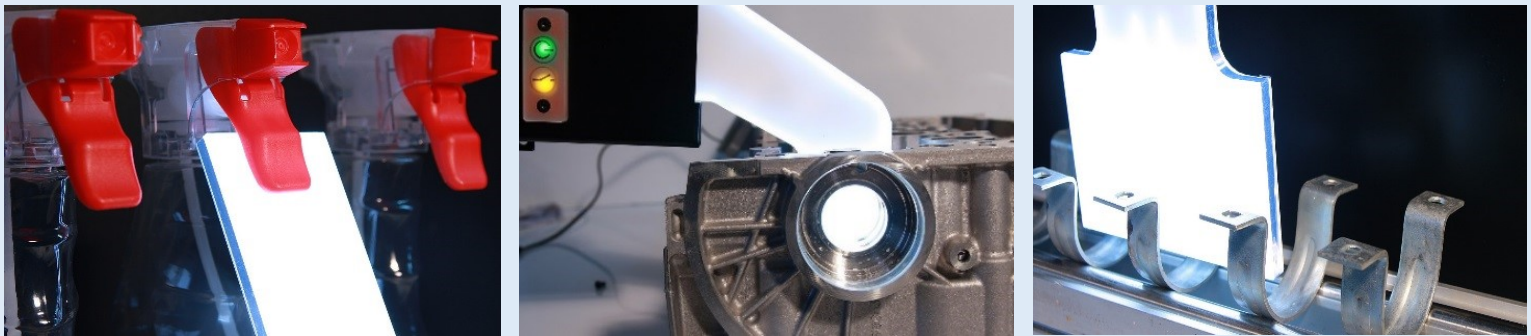
- ✓ customized shapes of lightguide and lighting areas
- ✓ **External electronics and LED's**
- ✓ Integrated optocoupler and operation display
- ✓ custom-specific adjustments are possible



datasheet pdf.	drawing pdf. / step.	model order code (in lightcolour white)	lighting area mm	overall size Basic approx. mm	light intensity W by white	price € / piece
for steady mode with integrated optocoupler and operating display:						
		X-X-Sled-3-LS-19w	customized	90 x 90 x 20	2,9 W	on request

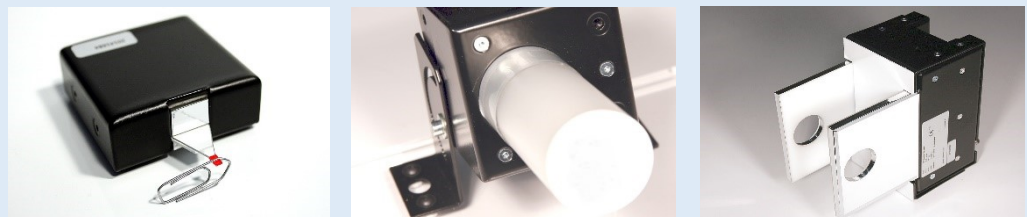
Possible light colours: -19w (white), -20r (red), -21b (blue), -22g (green), -23a (amber)

The lightsaber is always adjusted with the basic module according to customer specifications:



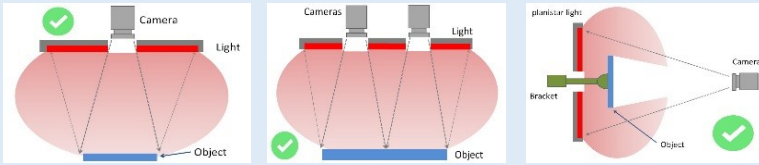
Here we kindly ask you to send us a request with a small sketch or description.

+49 (0) 9364 8060-0
sales@planistar.de



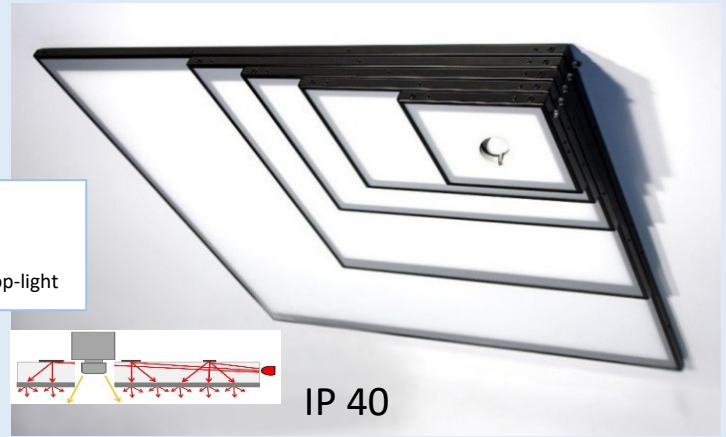


Sled-1-VA for top-light applications with breakthrough for camera



- ✓ Breakthrough is always customized
- ✓ non external controller necessary
- ✓ internal single control systems
- ✓ good price-performance
- ✓ custom-specific adjustments are possible

 Information about the selection of a top-light



datasheet pdf.	drawing pdf. / step.	model order code (in lightcolour white)	lighting area mm	overall size approx. mm	light intensity approx. lx	price € / piece
		15-15-Sled-1-VA2-18w	150 x 150	200 x 190 x 20	25.000	435,00
		20-30-Sled-1-VA2-18w	200 x 300	250 x 340 x 20	25.000	780,00
		30-40-Sled-1-VA2-18w	300 x 400	350 x 440 x 20	18.000	1035,00
		50-50-Sled-1-VA2-18w	500 x 500	580 x 540 x 20	11.000	1395,00
		80-80-Sled-1-VA2-18w	800 x 800	880 x 840 x 20	6.000	1875,00

Possible light colours: -18w (white), -20r (red), -21b (blue), -22g (green), -23a (amber)

Assembled according to customers specifications:

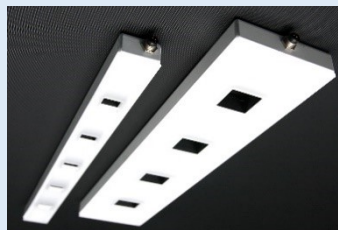
We designed our development and production structure to cater for non-standard requirements to produce. Please consult us with your application:



+49 (0) 9364 8060-0

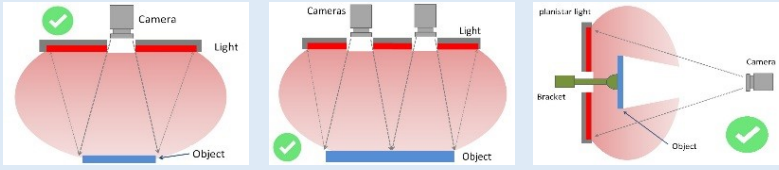


sales@planistar.de





Sled-2-VA for top light applications with breakthrough for camera



- ✓ **the Breakthrough is always customized**
- ✓ small frame with 9 mm on two sides
- ✓ none external controller necessary
- ✓ internal single control systems
- ✓ from size 16-16 with **integrated optocoupler**
- ✓ custom-specific adjustments are possible



Information PDF
about the selection of a top-light



datasheet pdf.	drawing pdf. / step.	model order code (in lightcolour white)	lighting area mm	overall size approx. mm	light intensity approx. lx	price € / piece
		4-4-Sled-2-VA-16w	40 x 40	58 x 80 x 20	10.000	335,00
		4-8-Sled-2-VA-16w	40 x 80	58 x 120 x 20	13.000	370,00
		8-8-Sled-2-VA-16w	80 x 80	98 x 120 x 20	20.000	415,00
From here with integrated optocoupler and operating display:						
		16-16-Sled-2-VA-19w-O	160 x 160	178 x 200 x 20	55.000	561,00
		24-24-Sled-2-VA-19w-O	240 x 240	258 x 280 x 20	40.000	810,00
		16-48-Sled-2-VA-19w-O	160 x 480	178 x 520 x 20	60.000	1155,00
		48-48-Sled-2-VA-19w-O	480 x 480	498 x 520 x 20	20.000	1575,00
		78-78-Sled-2-VA-19w-O	780 x 780	860 x 840 x 20	11.000	2355,00

Possible light colours: -16w/-19w (white), -20r (red), -21b (blue), -22g (green), -23a (amber) or with IR 850 nm -25ir (housing white and height of 50 mm)

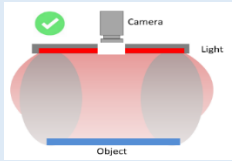
Assembled according to customers specifications:
We designed our development and production structure to cater for non-standard requirements to produce.
Please consult us with your application:

+49 (0) 9364 8060-0
 sales@planistar.de





Sled-3-VAC for top-light application with breakthrough for camera and cosine-correction



Information about the cosine correction



- ✓ corrected light extraction against the light loss at the edges
- ✓ strength of the cosine-correction adjustable
- ✓ clear cover sheet
- ✓ internal single control systems
- ✓ with switch input
- ✓ custom-specific adjustments are possible



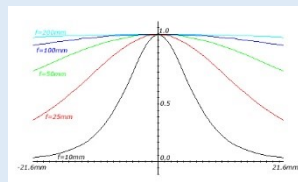
datasheet pdf.	drawing pdf. / step.	modell order code (in lightcolour white)	lighting area mm	overall size approx. mm	light intensity approx. lx	price € / piece
with integrated optocoupler and operating display :						
		48-48-Sled-3-VAC-19w-18w-O-KD	480 x 480	570 x 560 x 30	15.000 lx in 30 cm	1950,00
		78-78-Sled-3-VAC-19w-18w-O-KD	780 x 780	870 x 860 x 30	9.000 lx in 50 cm	2990,00

Possible light colours: -19w (white), other colours on request

What is cosine-correction?

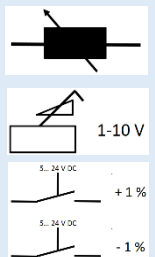
The „law of cos⁴“ describes the natural fall of light to the edge of the lighted area. By using a lens, the brightness will decrease with the factor cos⁴ α between center and edge of the lighted area. The brightness B (α) depends on the viewing angle of the camera

$$B(\alpha) = B_0 \cdot \cos^4 \alpha$$

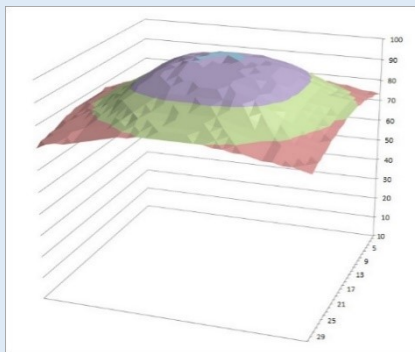


Cosine-correction by:

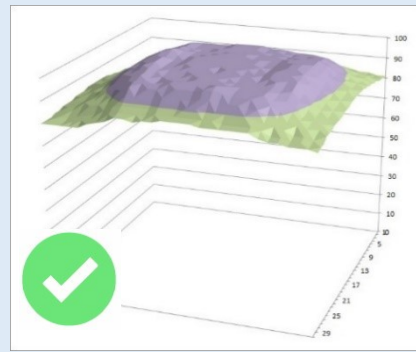
- internal potentiometer
- analog input 1-10 V
- digitale input +1%, -1%



Uniformity of lighted area 40x40cm without cosine-correction

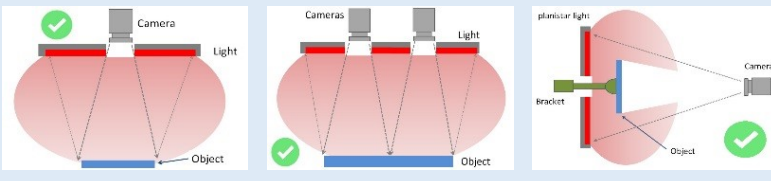


Uniformity of lighted area 40x40cm with cosine-correction





Sled-2-Flat-VA for top-light applications with breakthrough for camera



- ✓ The breakthrough is always customized
- ✓ flat design with only height of 11 mm
- ✓ none external controller necessary
- ✓ internal single control systems
- ✓ custom-specific adjustments are possible

Infos über die Auswahl einer Flächenbeleuchtung

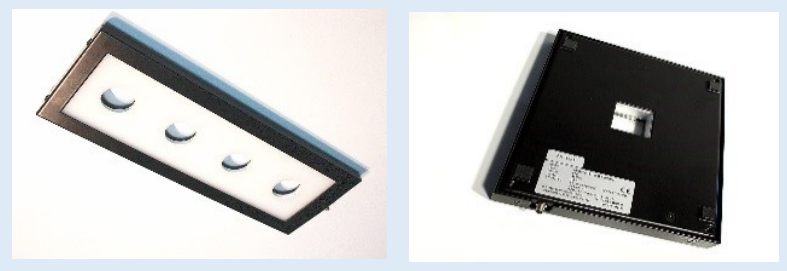


datasheet pdf.	drawing pdf. / step.	model order code (in light colour white)	lighting area mm	overall size approx. mm	light intensity approx. lx	price € / piece
		7,5-7,5-Sled-2-Flat-VA-16w	75 x 75	105 x 110 x 11	40.000	525,00
		14-14-Sled-2-Flat-VA-16w	140 x 140	170 x 175 x 11	23.000	705,00
		20-20-Sled-2-Flat-VA-16w	200 x 200	230 x 235 x 11	20.000	830,00
		32,5-32,5-Sled-2-Flat-VA-16w	325 x 325	355 x 360 x 11	10.000	1145,00
		45-45-Sled-2-Flat-VA-16w	450 x 450	480 x 485 x 11	7.500	1535,00

Possible light colours: -16w (white)

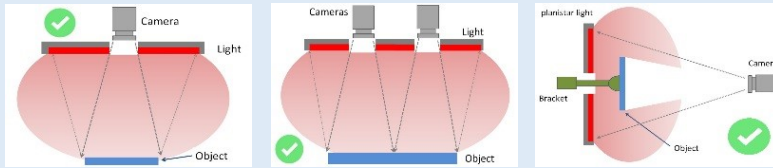
Assembled according to customers specifications:
 We designed our development and production structure to cater for non-standard requirements to produce.
 Please consult us with your application:

+49 (0) 9364 8060-0
sales@planistar.de





Xled-3-VA for top-light applications with breakthrough for camera



- ✓ with steady and flashing mode
- ✓ the breakthrough is always customized
- ✓ small frame with 9 mm on two sides
- ✓ internal microprocessor controlled
- ✓ from size 22-22 with 1-10 V interface
- ✓ custom-specific adjustments are possible

Information about the selection of a top light

datasheet pdf.	drawing pdf. / step.	model order code (in lightcolour white)	lighting area mm	overall size approx. mm	light intensity cont. / flash approx. lx	price € / piece	
for steady mode with integrated optocoupler and operating display:							
			7-7-Xled-3-VA-46w	70 x 70	210 x 90 x 21	75.000 / 300.000	615,00
			7-12-Xled-3-VA-46w	70 x 120	180 x 140 x 21	65.000 / 260.000	715,00
			7-22-Xled-3-VA-46w	70 x 220	155 x 240 x 21	110.000 / 440.000	975,00
			12-12-Xled-3-VA-46w	120 x 120	230 x 240 x 21	95.000 / 380.000	820,00
With switching inputs and 1-10 V interface for steady and flashing mode:							
			22-22-Xled-3-VA-46w	220 x 220	310 x 240 x 21	60.000 / 240.000	1235,00
			32-32-Xled-3-VA-46w	320 x 320	410 x 340 x 21	30.000 / 110.000	1580,00
			32-62-Xled-3-VA-46w	320 x 620	410 x 640 x 21	30.000 / 110.000	2415,00
			82-82-Xled-3-VA-46w	820 x 820	910 x 840 x 21	18.000 / 65.000	3645,00

Possible light colours: -46w (white), -47r (red)

Assembled according to customers specifications:

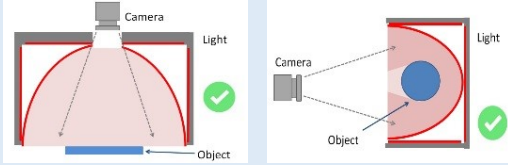
We designed our development and production structure to cater for non-standard requirements to produce. Please consult us with your application:

+49 (0) 9364 8060-0
 sales@planistar.de





Lightttunnel for diffuse light applications



- ✓ **Breakthrough always customized**
- ✓ none external Controller necessary
- ✓ internal single control system for high life time
- ✓ custom-specific adjustments are possible



datasheet pdf.	drawing pdf. / step.	model order code (in light colour white)	lighting area mm	overall size approx. mm	light intensity approx. steady/flash	price € / piece
For steady mode with integrated optocoupler and operation display:						
		10-20-Sled-2-TU-19w-O	100 x 200	165 x 255 x 88	57.000 / ----	1325,00
		20-30-Sled-2-TU-19w-O	200 x 300	265 x 355 x 138	45.000 / ----	1820,00
		30-40-Sled-2-TU-19w-O	300 x 400	365 x 455 x 188	30.000 / ----	2708,00

Possible light colours: -19w (white), -20r (red), -21b (blue), -22g (green), -23a (amber), -27rgbw (red,green,blue,white)

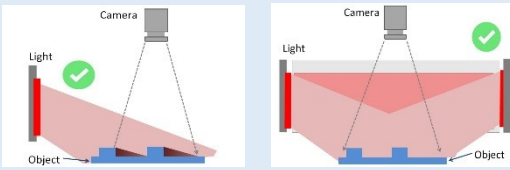
Assembled according to customers specifications:
 We designed our development and production structure to cater for non-standard requirements to produce.
 Please consult us with your application:

+49 (0) 9364 8060-0
sales@planistar.de

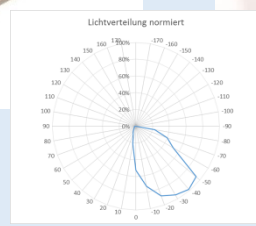
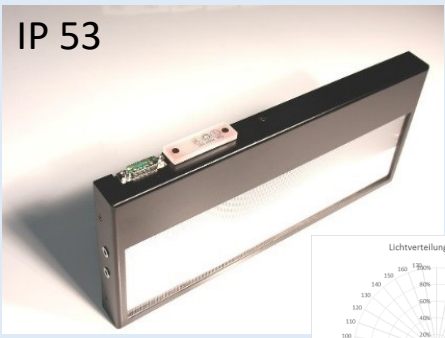




Dark field illumination / light hood for top light applications



- ✓ to create big dark fields
- ✓ ideal for glossy objects
- ✓ none external Controller necessary
- ✓ custom-specific adjustments are possible

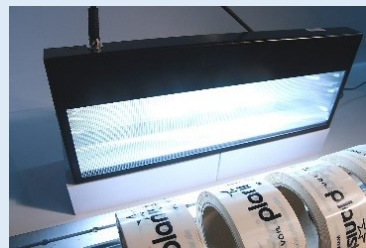


datasheet pdf.	drawing pdf. / step.	model order code (in light colour white)	lighting area mm	overall size approx. mm	light intensity approx. steady / flash.	price € / piece
dark field illumination , switch inputs and 1-10 V interface for steady and flashing mode:						
		30-Xled-3-SL-46w	300 x 100	350 x 150 x 30	25.000 / 95.000 in 15 cm	660,00
		40-Xled-3-SL-46w	400 x 100	450 x 150 x 30	50.000 / 185.000 in 15 cm	750,00
light hood , switch inputs and 1-10 V interface for steady and flashing mode: (set consist of 4 dark field illumination and mounting brackets –W5)						
		4x30-Xled-3-SL-46w + 1x-W5	200 x 200	485 x 485 x 150	35.000 / 130.000 in 5 cm	2270,00
		4x40-Xled-3-SL-46w + 1x-W5	300 x 300	585 x 585 x 150	40.000 / 150.000 in 10 cm	2412,00

Possible light colours: -46w (white), -47r (red)

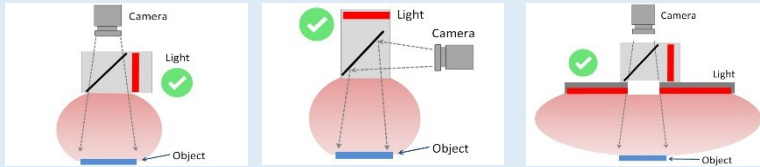
Assembled according to customers specifications:
 We designed our development and production structure to cater for non-standard requirements to produce.
 Please consult us with your application:

+49 (0) 9364 8060-0
sales@planistar.de





Coaxial light for diffuse top light applications

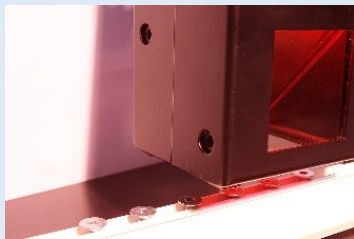


- ✓ **for steady and flashing mode**
- ✓ high quality beam splitter
- ✓ non reflection front sheet
- ✓ integrated controller (microprocessor)
- ✓ custom-specific adjustments are possible

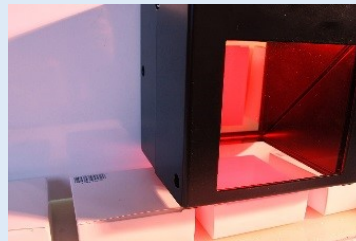


datasheet pdf.	drawing pdf. / step.	modell order code (in light colour white)	lighting area mm	overall size approx. mm	light intensity approx. steady / flash lx	price € / piece
For steady and flashing mode with switching inputs and 1-10 V interface:						
		10-10-Xled-3-KX-46w	100 x 100	165 x 145 x 128	25.000 / 90.000 in 5 cm	1880,00

Possible light colours: -46w (white), -47r (red)



in large sizes up to 300 x 900 mm



Assembled according to customers specifications:

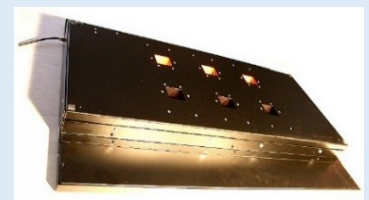
We designed our development and production structure to cater for non-standard requirements to produce. Please consult us with your application:



+49 (0) 9364 8060-0

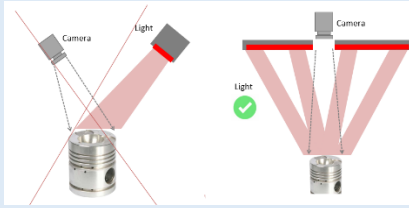


sales@planistar.de





Hled-3-focusor directional light from all sides, pinpoint



Information About the focusor system



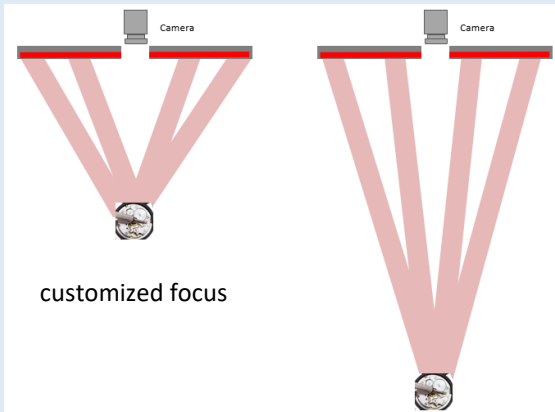
- ✓ **Directed and shadow-free light from all sides**
- ✓ **Customized focus, readjustable**
- ✓ no scattered light in the area
- ✓ custom-specific adjustments are possible



IP 53

datasheet pdf.	drawing pdf. / step.	model order code (in light colour white)	lighting area approx. mm	overall size approx. mm	light intensity approx. lx steady / flash	price € / piece
		For steady and flashing mode with switching inputs and 1-10 V interface:				
		12-Hled-3-STF-60w	30 x 30	220 x 270 x 30	100.000 / 400.000 lx in 20 cm 35.000 / 130.000 lx in 50 cm	995,00

Possible light colours: -60w (white), -61r (red), -62b (blue), -63g (green), -65ir (infrared 850 nm), -66uv (ultraviolett)



Assembled according to customers specifications:



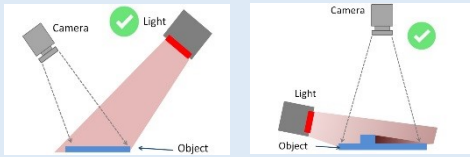
+49 (0) 9364 8060-0



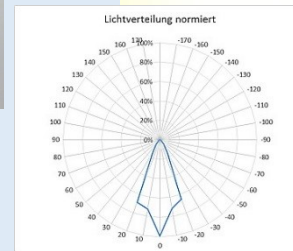
sales@planistar.de



Directional bar light for top light applications



- ✓ Sled-3 for steady mode
- ✓ Xled-3 for steady and flashing mode
- ✓ internal high gloss reflectors
- ✓ segmented current control
- ✓ none external controller necessary
- ✓ custom-specific adjustments are possible



datasheet pdf.	drawing pdf. / step.	model order code (in light colour white)	lighting area mm	overall size approx. mm	light intensity steady / flash approx. lx	price € / piece	
for steady mode with integrated optocoupler:							
			11-Sled-3-BG-19w-O	110 x 24	170 x 29 x 60	33.000 / ---- in 10 cm	320,00
			43-Sled-3-BG-19w-O	430 x 24	495 x 29 x 60	52.000 / ----- in 10 cm	520,00
			87-Sled-3-BG-19w-O	870 x 24	935 x 29 x 60	57.000 / ----- in 10 cm	665,00
			147-Sled-3-BG-19w-O	1470 x 24	1535 x 29 x 60	57.000 / ----- in 10 cm	1035,00
for steady and flashing mode with switching inputs and 1-10 V interface:							
			20-Xled-3-BG-46w	200 x 27	220 x 80 x 55	120.000 / 330.000 in 10 cm	590,00
			40-Xled-3-BG-46w	400 x 27	420 x 80 x 55	140.000 / 400.000 in 10 cm	890,00
			80-Xled-3-BG-46-w	800 x 27	820 x 80 x 55	150.000 / 430.000 in 10 cm	1585,00
			140-Xled-3-BG-46-w	1400 x 27	1420 x 80 x 55	170.000 / 470.000 in 10 cm	2460,00

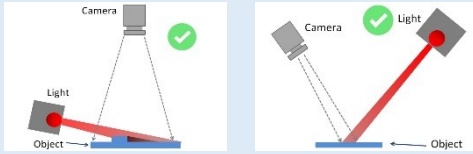
Possible light colours: by Sled-3: -19w (white), -20r (red), -21b (blue), -22g (green), -23a (amber), -27rgbw (red,green,blue,white) by Xled-3: -46w (white), -47r (red)

Assembled according to customers specifications:
 We designed our development and production structure to cater for non-standard requirements to produce.
 Please consult us with your application:

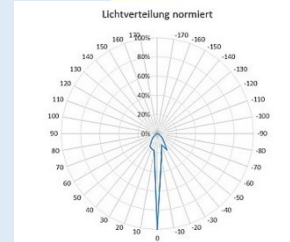
+49 (0) 9364 8060-0
 sales@planistar.de



Line lighting for top light applications



- ✓ Sled-3 for steady mode
- ✓ Xled-3 for steady and flashing mode
- ✓ Internal lens-systems
- ✓ segmented current control
- ✓ none external controller necessary
- ✓ custom-specific adjustments are possible



datasheet pdf.	drawing pdf. / step.	model order code (in light colour white)	lighting area mm	overall size approx. mm	light intensity steady / flash approx. lx	price € / piece	
for steady mode with integrated optocoupler:							
			11-Sled-3-BZ-19w-O	110 x 10	170 x 29 x 70	160.000 / ---- in 5 cm	399,00
			43-Sled-3-BZ-19w-O	430 x 10	495 x 29 x 70	190.000 / ---- in 5 cm	645,00
			87-Sled-3-BZ-19w-O	870 x 10	935 x 29 x 70	190.000 / ---- in 5 cm	830,00
			147-Sled-3-BZ-19w-O	1470 x 10	1535 x 29 x 70	200.000 / ---- in 5 cm	1290,00
for steady and flashing mode with switching inputs and 1-10 V interface:							
			20-Xled-3-BZ-46w	200 x 10	220 x 80 x 55	850.000 / 2,4 Mio in 5 cm	680,00
			40-Xled-3-BZ-46w	400 x 10	420 x 80 x 55	850.000 / 2,4 Mio in 5 cm	1025,00
			80-Xled-3-BZ-46-w	800 x 10	820 x 80 x 55	850.000 / 2,4 Mio in 5 cm	1820,00
			140-Xled-3-BZ-46-w	1400 x 10	1420 x 80 x 55	850.000 / 2,4 Mio in 5 cm	2830,00

Possible light colours: by Sled-3: -19w (white), -20r (red), -21b (blue), -22g (green), -23a (amber), -27rgbw (red,green,blue,white) by Xled-3: -46w (white), -47r (red)

Assembled according to customers specifications:

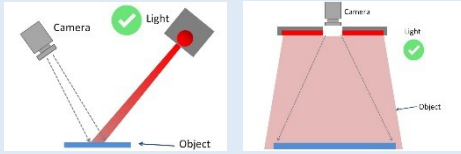
We designed our development and production structure to cater for non-standard requirements to produce. Please consult us with your application:

+49 (0) 9364 8060-0

sales@planistar.de



Bright spot light for top light application



- ✓ high quality optics
- ✓ intern microprocessor controlled
- ✓ impulse-pause monitoring
- ✓ segmented current control
- ✓ switching inputs and interface
- ✓ custom-specific adjustments are possible



IP 53

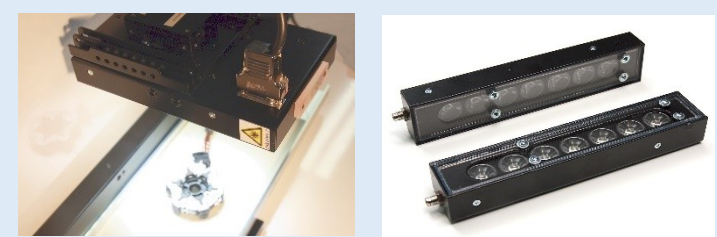


datasheet pdf.	drawing pdf. / step.	model order code (in light colour white)	overall size approx. mm	light intensity steady / flash approx. lx	price € / piece
for steady and flashing mode with switching inputs:					
		Hled6-3-ST-60w-30°	85 x 170 x 30+25	30.000 / 110.000 in 20 cm	410,00
for steady and flashing mode with switching inputs and 1-10 V interface:					
		Hled12-3-STR-60w-30°	134 x 211 x 30+25	25.000 / 100.000 in 30 cm	730,00
for steady and flashing mode with switching inputs and 1-10 V interface:					
		Hled36-3-STVA-60w-30°	330 x 330 x 30+25	13.000 / 50.000 in 100 cm	1990,00

Possible light colours: -60w (white), -61r (red), -62b (blue), -63g (green), -65ir (infrared 850 nm), -66uv (ultraviolett)
 Possible optics: 15°, 30°, 60°

Assembled according to customers specifications:
 We designed our development and production structure to cater for non-standard requirements to produce.
 Please consult us with your application:

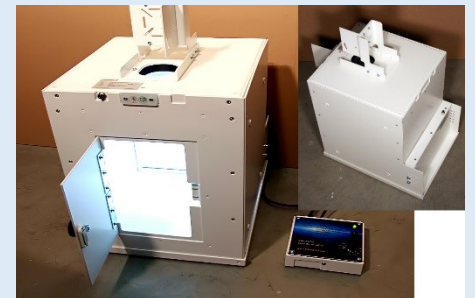
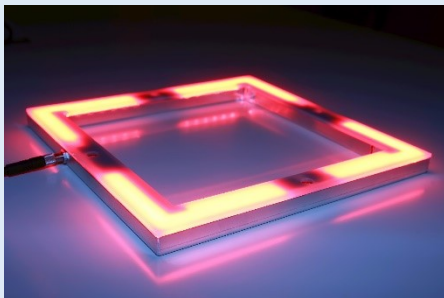
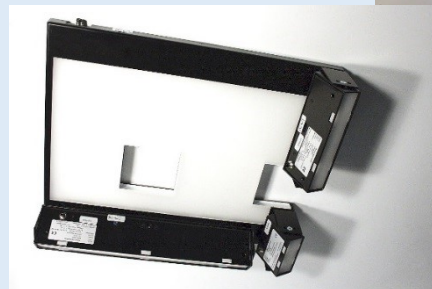
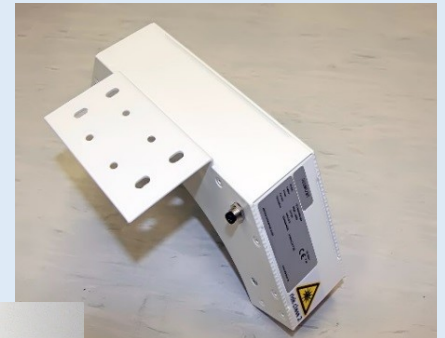
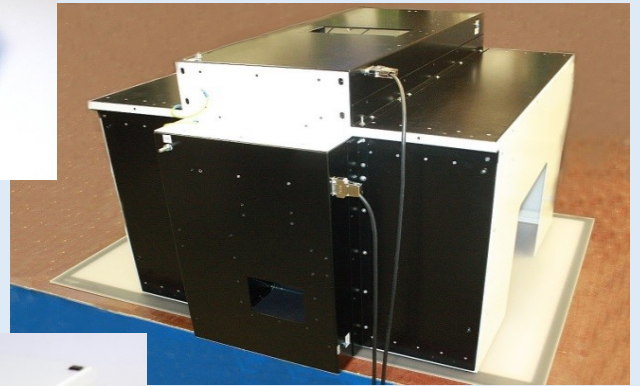
+49 (0) 9364 8060-0
 sales@planistar.de



Manufacturing according customer specification:

The reasons for a short production time at planistar are not a secret:

- short information lines and workflow
- complete manufacturing and monitoring at planistar
- good quality, organization and documentation
- experienced and dedicated team
- knowledge and experience since 1990

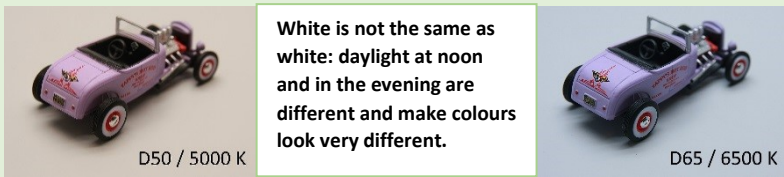


including prices and links to data sheets and drawings

Our Colour Control product group consists of various systems that are equipped with a colour rendering of approx. Ra95. This means that a good colour assessment is always possible, if required. The lights are always dimmable to adjust the brightness of the test task and the environment.

The following standards were taken into account when developing the lights:

- ✔ **DIN EN ISO 3668** (visual comparison of the colour of coatings, D65)
- ✔ **DIN 3664** (viewing conditions for the graphics industry, D50)
- ✔ **DIN 6173** (viewing conditions for the graphics industry, D50)



Visual inspection, assessment or control in **transmitted light**

CB backlight
page 24

ESD protection

Visual inspection, assessment or control in **reflected light**

CW workplace
page 25

CWT table
page 26

Highest quality with R1-R14 ≥ 90

CC cabin
page 27

CI inspection
page 28

Customized solutions from planistar (page 29)



CB backlight for transmitted light applications, edge assessment and colour assessment



- ✓ high colour rendering index approx. Ra95
- ✓ even illumination thanks to the edge light system
- ✓ adjustable light intensity
- ✓ robust housing with anti-reflective cover plate
- ✓ no edge elevation
- ✓ **without IR- / UV-component!**



datasheet pdf.	drawing pdf. / step.	model order code	lighting area mm	overall size approx. mm	light intensity approx. lx	price € / piece
Light intensity adjustable via rotary knob, incl. simple table controller and power supply.						
		4-CB-D50	350 x 250	400 x 330 x 20	5.000 lx	795,00
		3-CB-D50	450 x 350	500 x 430 x 20	5.000 lx	1140,00
		2-CB-D50	650 x 450	700 x 530 x 20	5.000 lx	1535,00
Light intensity adjustable via rotary knob, incl. digital table controller and power supply.						
		4-CB-D50-D	350 x 250	400 x 330 x 20	5.000 lx	895,00
		3-CB-D50-D	450 x 350	500 x 430 x 20	5.000 lx	1235,00
		2-CB-D50-D	650 x 450	700 x 530 x 20	5.000 lx	1632,00

Possible light colours:

- D30 (3.000K, approx. Ra95), light unit with **3000K warm tone** (incandescent lamp)
- D40 (4.000K, approx. Ra95), light unit with **4000K neutral white** (warm tone)
- D50 (5.000K, approx. Ra95), light unit with **5000K for the graphic industry**
- D65 (6.500K, approx. Ra95), light unit with **6500K for the manufacturing industry**

Accessories on request:

- glass plate with or without a bracket
- display or wall bracket
- ruler or other imprints
- carrying handles or protective hoods
- ESD version



Assembled according to customers specifications:

We designed our development and production structures to cater for non-standard requirements to produce.

Please consult us with your application:



+49 (0) 9364 8060-0

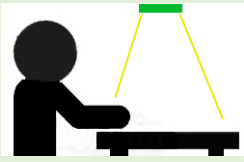


sales@planistar.de

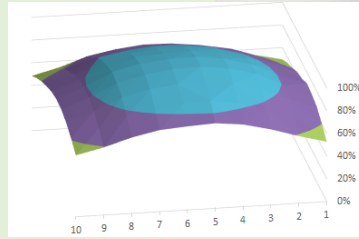




CW Workplace, the workplace lamp for high demands on light quality

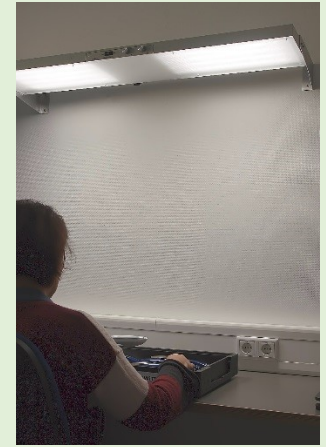


- ✓ high colour rendering approx. Ra95
- ✓ uniform and bright illumination at the work area
- ✓ Adjustable light intensity
- ✓ glare-free through prism front
- ✓ flicker-free high-frequency technology
- ✓ **without IR- / UV-component**



illumination in
90 cm distance at

140 x 60 cm
working area



datashett pdf.	drawing pdf. / step.	model order code	working area approx. mm	overall size approx. mm	light intensity approx. lx	price € / piece
		Light unit with one light colour, light intensity adjustable via rotary knob, including power supply				
		120/4-CW-D50	1400 x 600	1200 x 250 x 40	2.500 lx in 90 cm	935,00
		Two-colour light unit with D50 and D65, light colour switchable and adjustable via rotary knob, including power supply				
		120/4-CW-D50/D65	1400 x 600	1200 x 250 x 40	2.500lx in 90 cm	1475,00

Possible light colours:

- D30 (3.000K, ca. Ra95), light unit with **3000K warm tone** (incandescent lamp)
- D40 (4.000K, ca. Ra95), light unit with **4000K neutral white** (warm tone)
- D50 (5.000K, ca. Ra95), light unit with **5000K for the graphic industry**
- D65 (6.500K, ca. Ra95), light unit with **6500K for the manufacturing industry**
- **or a combination of 2 light colours**

Accessories:

various holding options as required on request

Assembled according to customers specifications:

We designed our development and production structures to cater for non-standard requirements to produce.

Please consult us with your application:



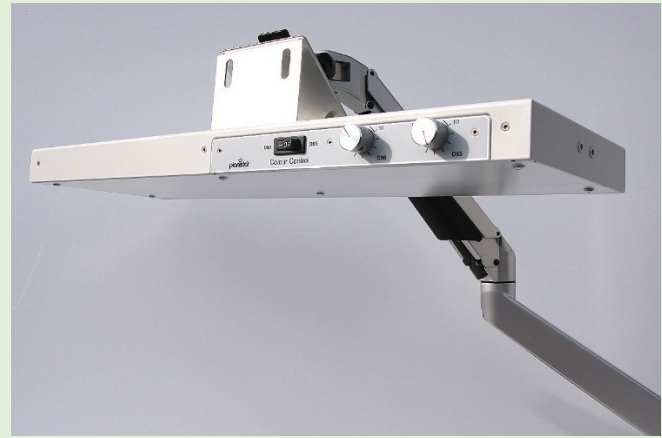
+49 (0) 9364 8060-0



sales@planistar.de



CWT Workplace Table, the table lamp for high demands on light quality



- ✓ high colour rendering index approx. Ra95
- ✓ uniform and bright illumination in the work area
- ✓ adjustable light intensity
- ✓ suspension via monitor holder or bracket
- ✓ glare-free through prism front
- ✓ flicker-free high-frequency technology
- ✓ **without** IR- / UV-components

datasheet pdf.	drawing pdf. / step.	model order code	working area approx. mm	overall size approx. mm	light intensity approx. lx	price € / piece
	Light unit with one light colour, light intensity adjustable via rotary knob, including power supply					
	60/2-CWT-D50	600 x 300	600 x 200 x 40	5.000 lx in 40 cm	820,00	
Two-colour light unit with D50 and D65, light colour switchable and adjustable via rotary knob, including power supply						
	60/2-CWT-D50/D65	600 x 300	600 x 200 x 40	5.000 lx in 40 cm	1140,00	

Possible light colours:

- D30 (3.000K, ca. Ra95), light unit with **3000K warm tone** (incandescent lamp)
- D40 (4.000K, ca. Ra95), light unit with **4000K neutral white** (warm tone)
- D50 (5.000K, ca. Ra95), light unit with **5000K for the warm tone graphic industry**
- D65 (6.500K, ca. Ra95), light unit with **6500K for the manufacturing industry**
- **or a combination of 2 light colours**

Accessories:

various holding options as required on request



Assembled according to customers specifications:

We designed our development and production structures to cater for non-standard requirements to produce.

Please consult us with your application:



+49 (0) 9364 8060-0



sales@planistar.de



CC cabin, highest light quality for colour assessments



Also with half-black background for partical testing:



- ✓ highest colour rendering, total Ri ≥ 95
- ✓ colour values R1 bis R14 ≥ 90 ,
- ✓ external light isolation through cabin shape
- ✓ adjustable light intensity
- ✓ without IR- / UV-components

datasheet pdf.	drawing pdf. / step.	model order code	working area approx. mm	overall size approx. mm	light intensity approx. lx	price € / piece
----------------	----------------------	------------------	-------------------------	-------------------------	----------------------------	-----------------



Light unit with one light colour (including red correction), light intensity adjustable via rotary knob, including plug-in power supply

55-40-CC-D50/r	550 x 400	600 x 450 x 500	5.000 lx	1590,00
-----------------------	-----------	-----------------	----------	---------

Two-colour light unit with D50 and D65 (including red correction, light colour switchable and adjustable via rotary knob, including plug-in power supply

55-40-CC-D50/D65/r	550 x 400	600 x 450 x 500	5.000 lx	2140,00
---------------------------	-----------	-----------------	----------	---------

Possible light colours:

- D30 (3.000K, ca. Ra95), light unit with **3000K warm tone** (incandescent lamp)
- D40 (4.000K, ca. Ra95), light unit with **4000K neutral white** (warm tone)
- D50 (5.000K, ca. Ra95), light unit with **5000K for the graphic industry**
- D65 (6.500K, ca. Ra95), light unit with **6500K for the manufacturing industry**
- **or a combination of 2 light colours**

Accessories:

on request

Assembled according to customers specifications:

We designed our development and production structures to cater for non-standard requirements to produce.

Please consult us with your application:



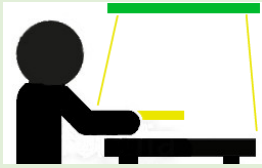
+49 (0) 9364 8060-0



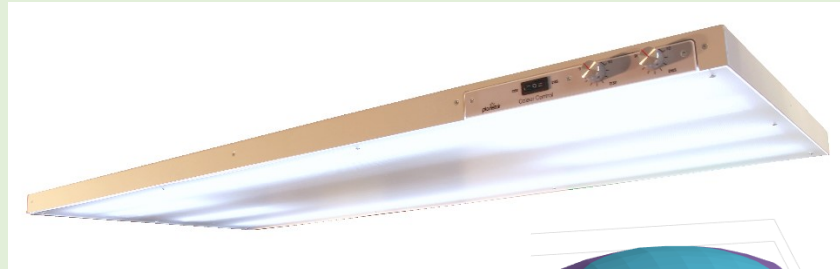
sales@planistar.de



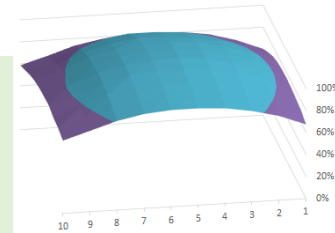
CI inspection, highest light quality for colour assessments



- ✓ highest rendering, total Ri \geq 95
- ✓ colour values R1 to R14 \geq 90
- ✓ uniform illumination of the work area
- ✓ adjustable light intensity
- ✓ without IR- / UV-components



Illumination in
90 cm distance at
140 x 60 cm
working area



datasheet pdf.	drawing pdf. / step.	model order code	working area approx. mm	overall size approx. mm	light intensity approx. lx	price € / piece
Light unit with one light colour (including red correction), light intensity adjustable via rotary knob, including plug-in power supply						
		140/4-CI-D50/r	1400 x 600	1400 x 600 x 40	2.400 lx in 90 cm	2990,00
Two-colour light unit with D50 and D65, light colour switchable and adjustable via rotary knob, including plug-in power supply						
		140/4-CI-D50/D65/r	1400 x 600	1400 x 600 x 40	2.400 lx in 90 cm	3990,00

Possible light colours:

- D30 (3.000K, ca. Ra95), light unit with **3000K warm tone** (incandescent lamp)
- D40 (4.000K, ca. Ra95), light unit with **4000K neutral white** (warm tone)
- D50 (5.000K, ca. Ra95), light unit with **5000K for the graphic industry**
- D65 (6.500K, ca. Ra95), light unit with **6500K for the manufacturing industry**
- or a combination of 2 light colours

Accessories:

various holding options as required on request

Assembled according to customers specifications:

We designed our development and production structures to cater for non-standard requirements to produce.

Please consult us with your application:



+49 (0) 9364 8060-0

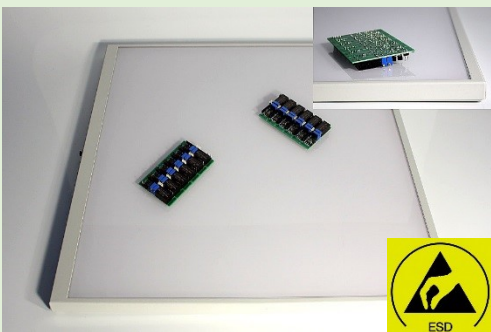
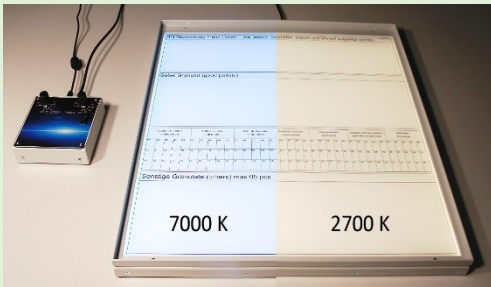


sales@planistar.de

Manufacturing according customer specification:

The reasons for short production times at planistar are no secret:

- short information lines and workflow
- complete manufacturing and monitoring at planistar
- good quality and thought-out organization and documentation
- an experienced and dedicated team
- knowledge and experience since 1990



including prices and links to data sheets and drawings

Linear lighting with LED technique

machine lighting
page 31



with **signal**effect
page 32



Spot lighting with LED technique

Spot lighting
page 33



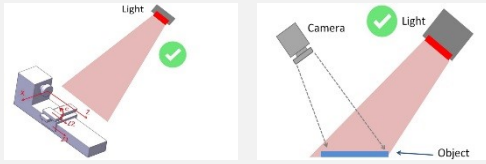
Signalspots
page 34



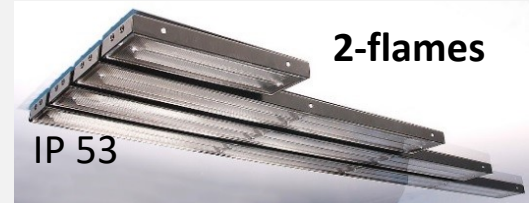
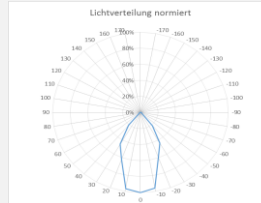
Customized solutions from planistar

(page 35)

LED machine lighting, linear



- ✓ light colour neutral white
- ✓ non blending
- ✓ efficient reflector system inside
- ✓ custom-specific adjustments possible



datasheet pdf.	drawing pdf. / step.	model order code (in lightcolour white)	lighting emission mm	overall size approx. mm	light intensity approx. lx	price € / piece
1-flame machine lighting						
		1-20-Sled-3-AL-16w	25 x 200	45 x 240 x 25	3.000 lx / 20 cm	180,00
		1-60-Sled-3-AL-16w	25 x 600	45 x 640 x 25	2.900 lx / 40 cm	275,00
		1-90-Sled-3-AL-16w	25 x 900	45 x 940 x 25	2.100 lx / 60 cm	355,00
		1-120-Sled-3-AL-16w	25 x 1200	45 x 1240 x 25	1.700 lx / 80 cm	425,00
2-flame machine lighting						
		2-20-Sled-3-AL-16w	55 x 200	80 x 240 x 25	5.600 lx / 20 cm	305,00
		2-60-Sled-3-AL-16w	55 x 600	80 x 640 x 25	5.700 lx / 40 cm	465,00
		2-90-Sled-3-AL-16w	55 x 900	80 x 940 x 25	4.000 lx / 60 cm	605,00
		2-120-Sled-3-AL-16w	55 x 1200	80 x 1240 x 25	3.300 lx / 80 cm	725,00

Possible light colours: -16w(white), -20r (red), -21b (blue), -22g (green), -23a (amber), 27rgbw (red,green,blue,white)

Assembled according to customers specifications:

We designed our development and production structures to cater for non-standard requirements to produce. Please consult us with your application:



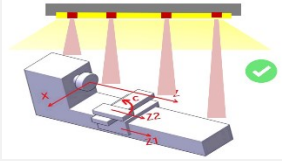
+49 (0) 9364 8060-0



sales@planistar.de



Bright LED machine lighting, linear with integrated signal spot-light



YouTube

- ✓ bright basic light in light colour neutral white 24V DC incl. switching input
- ✓ **12 W signal colour via switching input 5 ... 24 V DC (from TTL to PLC)**
- ✓ all LEDs with internal current limitation for a long service life
- ✓ expandable according to the modular system



IP 53

model order code (in light colour white)	overall size approx. mm	light intensity approx. lx	price € / piece
1-flame machine light including a signal colour with 4x3 watt LEDs. The basic light and the signal light are each switched by a switching input. When there is a signal, we recommend switching off the basic light at the same time, this increases the visibility considerably.			
1-60-Sled-3-ALS-O-19w-61r	25 x 600	80 x 640 x 27	5.500 lx / 40 cm 426,00
1-90-Sled-3-ALS-O-19w-61r	25 x 900	80 x 940 x 27	3.800 lx / 60 cm 515,00
1-120-Sled-3-ALS-O-19w-61r	25 x 1200	80 x 1240 x 27	3.000 lx / 80 cm 595,00
		second signal colour	on request

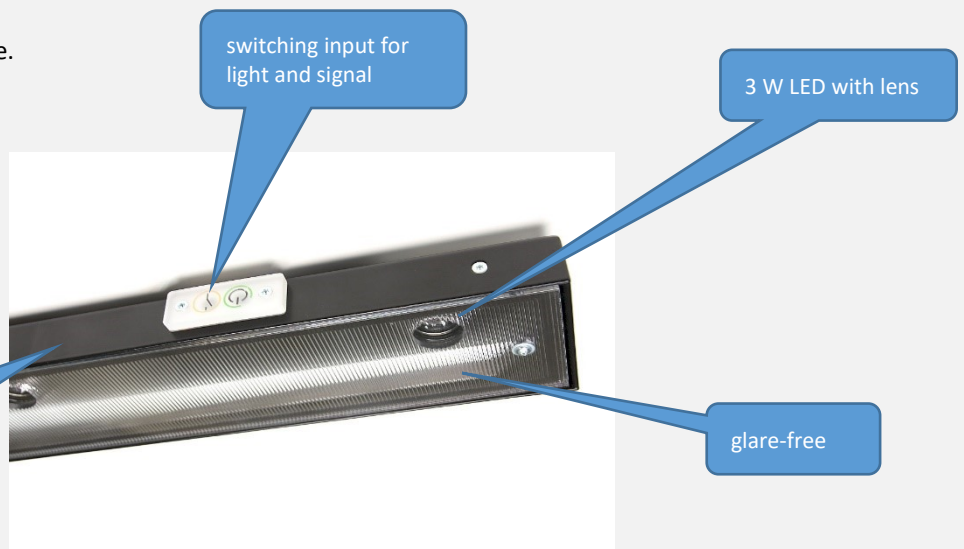
Possible light colours for basic-light: -19w (white, bright), D50 or D65 (Ra95)
 Possible light colours for signal spot-light : -58g (green), -59c (cyan), -61r (red), -62b (blue), -63y (yellow)
 Possible lenses for signal spot-lights: 15°, 30°, 60°

Assembled according to customers specifications:

We designed our development and production structures to cater for non-standard requirements to produce. Please consult us with your application:

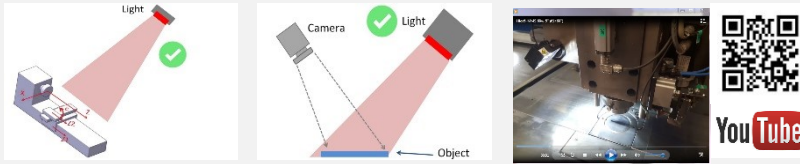
+49 (0) 9364 8060-0
sales@planistar.de

Robust 2 mm aluminum housing, powder coated





LED machine lighting, spot (with / without signal indicator)



- ✓ light colour neutralwhite
- ✓ high quality optics
- ✓ efficient reflector system inside
- ✓ optimal heat dissipation
- ✓ on request with **integrated signal indicator**

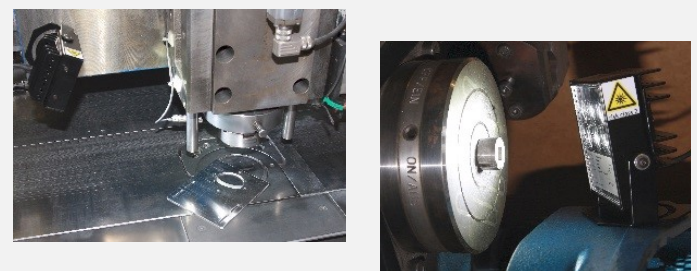


datasheet pdf.	drawing pdf. / step.	model order code (in light colour white)	overall size approx. mm	light intensity approx. lx	price € / piece
		Possible optics 15°, 30° or 60° (also combinable)			
		Hled6-1-MS-60w-30°	85 x 95 x 55 mm	24 V DC / 12 W	245,00
		Hled12-1-MS-60w-30°	155 x 95 x 55 mm	24 V DC / 17 W	345,00
		Performance as a signal light with signal colour and switch input (also combinable with different colours)			
		Hled6-MSS-60w-61r-30°	85 x 95 x 55 mm	24 V DC / 10 W	295,00
		Hled12-MSS-60w-61r-30°	155 x 95 x 55 mm	24 V DC / 15 W	425,00

Possible light colours : -60w (white), -58g (green), -59c (cyan), -61r (red), -62b (blue), -63y (yellow), -65ir (infrared), -66uv (ultraviolett)

Assembled according to customers specifications:
 We designed our development and production structures to cater for non-standard requirements to produce.
 Please consult us with your application:

+49 (0) 9364 8060-0
 sales@planistar.de





LED Signalspots (pick to light, pick by light, signal indicator)

- ✓ clear signal-lightspot
- ✓ 12-24 V operation voltage
- ✓ stray light isolation
- ✓ 5-24 V switching input
- ✓ efficient optic inside
- ✓ custom-specific adjustments are possible



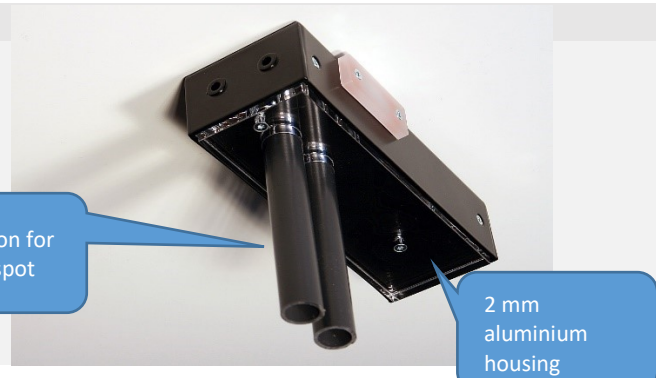
datasheet pdf.	drawing pdf. / step.	model order code (in light colour white)	overall size approx. mm	power max. W	price € / piece	
customized light colour possible						
		Hled1-SP-61r-7°	1-spot	110 x 57 x 38 mm	24 V DC / 3 W	245,00
		Hled2-SP-61r-58g-7°	2-spot	160 x 57 x 38 mm	24 V DC / 6 W	345,00
		Hled3-SP-61r-58g-63y-7°	3-spot	210 x 57 x 38 mm	24 V DC / 12 W	440,00
Spots with stray light isolation and clear signal lightspot						
		Hled1-SPS-61r-7°	1-spot	110 x 57 x 38 mm	24 V DC / 3 W	270,00
		Hled2-SPS-61r-58g-7°	2-spot	160 x 57 x 38 mm	24 V DC / 6 W	375,00
		Hled3-SPS-61r-58g-63y-7°	3-spot	210 x 57 x 38 mm	24 V DC / 12 W	485,00

Possible light colours: -60w (white), -58g (green), -59c (cyan), -61r (red), -62b (blue), -63y (yellow), -65ir (infrarot), -66uv (ultraviolett)

Assembled according to customers specifications:

We designed our development and production structures to cater for non-standard requirements to produce. Please consult us with your application:

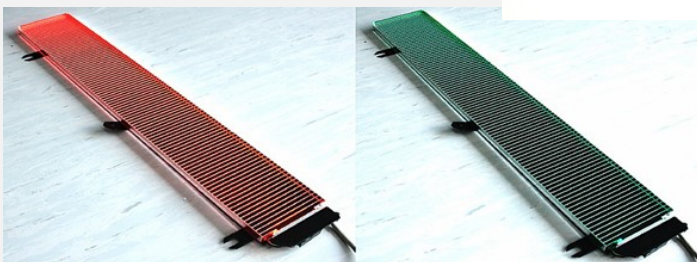
+49 (0) 9364 8060-0
sales@planistar.de



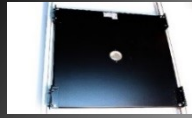
Manufacturing according customer specification:

The reasons for short production times at planistar are no secret:







- short information lines and workflow
- complete manufacturing and monitoring at planistar
- good quality and thought-out organization and documentation
- an experienced and dedicated team
- knowledge and experience since 1990







including prices and links to data sheets and drawings

Power cables and power suppliesPower cables
page 37Power supplies
page 38**Mounting brackets**Mounting
page 39for Spots
page 40for flat panels
page 41camera holder
page 42**External controller**Controller Sled
page 43Controller Xled
page 44**Other options to build in in planistar lightings**Polfilter
page 45Light intensifier
page 46



Power cable M5, 4-pole

			datasheet	price € / piece
AK5-5	Power cable M5, 4-pole straight, 5 m length, open ends			27,00
AK5.90-5	Power cable M5, 4-pole 90° angled, 5 m length, open ends			33,00
AD5	Adapter cable M5, 4-pole straight, 0,3 m length, low voltage 5,6 / 2,1 for power supply			35,00

Power cable M8, 4-pole

AK8-5	Power cable M8, 4-pole straight, 5 m length, open ends			27,00
AK8-10	Power cable M8, 4-pole straight, 10 m length, open ends			33,00
AK8.90-5	Power cable M8, 4-pole 90° angled, 5 m length, open ends			33,00
AD8	Adapter cable M8, 4-pole straight, 0,3 m length, low voltage 5,6 / 2,1 for power supply			35,00

Power cable Sub20, 2+5-pole

AKSub20-5	Power cable Sub-D, 2+5-pole 5 m length, open ends			95,00
AKSub20-10	Power cable Sub-D, 2+5-pole 10 m length, open ends			117,00
AKSub20-XX	Power cable Sub-D, 2+5-pole length customized with open ends			on request

For more you need please ask for them:







+49 (0) 9364 8060-0



sales@planistar.de

Power supplies

			datasheet	price € / piece
- NS36	Power supply 42 W input voltage: 100-240 V AC, 50-60 Hz (euro plug) output voltage: 24 V DC, 42 W, max. 1,75 A (Hohlstecker 2,1/5,5) cable length: 1,5 m			29,00
- NT90	desktop power supply 90 W input voltage: 90-264 V AC, 47-63 Hz (euro plug) output voltage: 24 V DC, 90 W, max. 3,75 A (low voltage 2,5/5,5 mm) cable length: 1,5 m + 1,2 m			85,00

For more you need please ask for them:



+49 (0) 9364 8060-0



sales@planistar.de

Mounting brackets

			datasheet	price € / piece
- W1	mounting set with circle mounting, aluminium 2 mm, powder coated black			16,00
- W2	mounting set with slight adjustment, aluminium 2 mm, powder coated black			16,00
- W3	mounting set for ring installation (for bar lightings) aluminium 2 mm, powder coated black			38,00
- W4	mounting set with good adjustment, aluminium 2 mm, powder coated black			16,00
- W5	mounting set for ring installation, (for dark field lightings) aluminium 2 mm, powder coated black			38,00

For more you need please ask for them:



+49 (0) 9364 8060-0



sales@planistar.de

Mounting bracket for spot lights

datasheet

price
€/ piece**- W6****mounting bracket for spot light
with universal adjustments**material: aluminium 2 mm
colour: black powder coated

34,00



For more you need please ask for them:



+49 (0) 9364 8060-0



sales@planistar.de

Mounting bracket for top-light panels with 20 mm high

datasheet

price
€ / peice

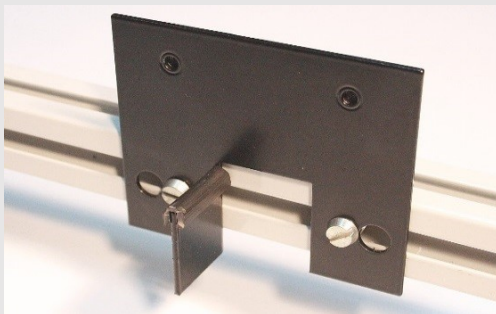
- **W10**

mounting brackets for top-light panels (4 pcs. of brackets)

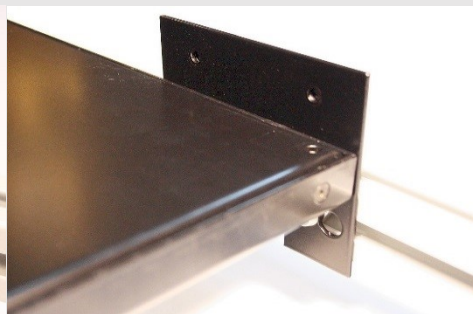
material: aluminium 2 mm
colour: black powder coated



54,00



fasten base brackets



put the light on



fix the light



For more you need please ask for them:



+49 (0) 9364 8060-0



sales@planistar.de

Universal mounting bracket for industrial cameras

datasheet

price
€ / piece

- KW5-xx

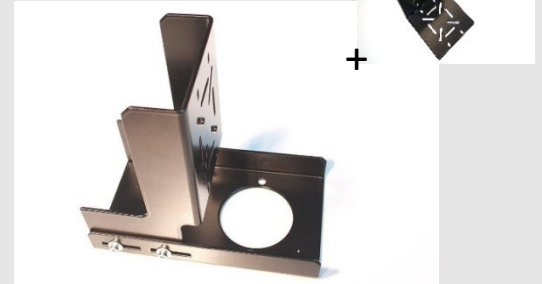
Universal mounting bracket for industrial cameras (incl. Adapter)

material: aluminium 2 mm

colour: black powder coated



39,00



KW5-30

for 30 mm breakthrough

KW5-40

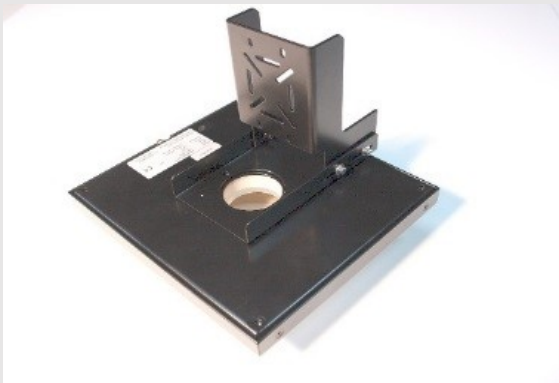
for 40 mm breakthrough

KW5-50

for 50 mm breakthrough

KW5-xx

for customized breakthrough
(not always round, also other forms possible)



You can send us the drawing of your camera (incl. lens) on request.
We will adapt our standard bracket to your camera if necessary.

For more you need please ask for them:



+49 (0) 9364 8060-0



sales@planistar.de

Extern controller for Sled-lights

datasheet

price
€/ piece

Controller2-Sled-Table

manual dimming controller for the table

- manual dimming via rotary knob
- digital dimming via button
- PWM-Dimming over 20 kHz (flicker free)
- fixed cable for the light



295,00

Controller2-Sled-Digital

dimming controller for switch cabinet

- manual dimming via rotary knob and button
- digital dimming via + / - input
- analogous dimming via 1-10 V interface
- PWM-Dimming over 20 kHz (flicker free)
- incl. DIN rail holder
- connection via terminals



295,00

Controller-Sled-P-optocoupler

switching via optocoupler (separate ground)

- 2 separate optocoupler-outputs
- operating displays
- incl. DIN rail holder
- connection via terminals



225,00

For more you need please ask for them :



+49 (0) 9364 8060-0



sales@planistar.de

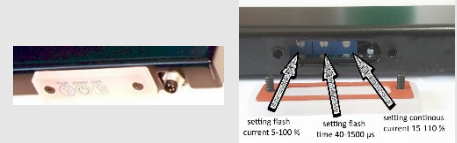
Operating manuals for internal Xled-Controller

Xled-lights with integrated M8 connection

- switching inputs for steady and flashing mode
- Potentiometer for adjustment current and flash time
- impulse – pause - monitoring via microprocessor
- continuous current controlled

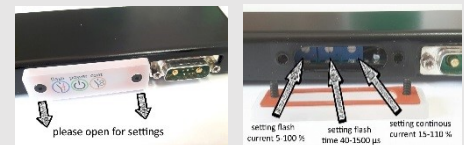


datasheet



Xled-lights with integrated Sub-D connection

- switching inputs for steady and flashing mode
- Potentiometer for adjustment current and flash time
- **1-10 V interface for adjustment brightness**
- impulse - pause - monitoring via microprocessor
- continuous current controlled



For more you need please ask for them:



+49 (0) 9364 8060-0



sales@planistar.de

Polfilter linear

Option -KD-POL (polfilter and clear frontsheet)

Against reflections:

- for top lights for **slightly reflective and matt** objects
- dot matrix from light recognizable

20 % surcharge
(on the basic price)

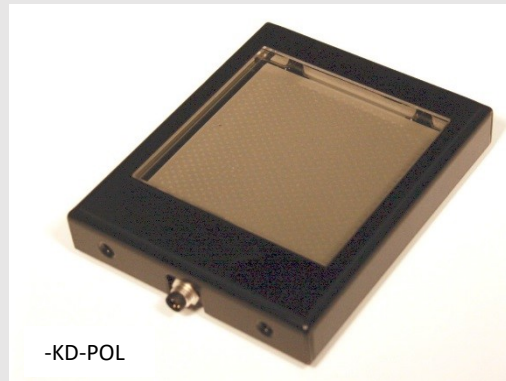
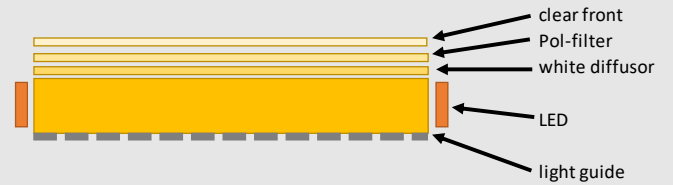


Option -POL (polfilter and white opaque diffusor)

Against reflections:

- for top lights for **highly shiny** objects
- dot matrix from light are not recognizable

30 % surcharge
(on the basic price)



For more you need please ask for them:



+49 (0) 9364 8060-0



sales@planistar.de

Light intensifying screen for clear edges and easier evaluation

The example measurement was taken with a luminaire with a 40 cm diagonal luminous area diagonal to the measuring area.
The characteristic curve shows the increase in brightness at a distance of [cm] from the measuring surface.

The maximum increase in brightness is reached at approx.: **diagonal of the illuminated areas = min. distance between luminaire and measuring area**

Option –KD (clear cover sheet)

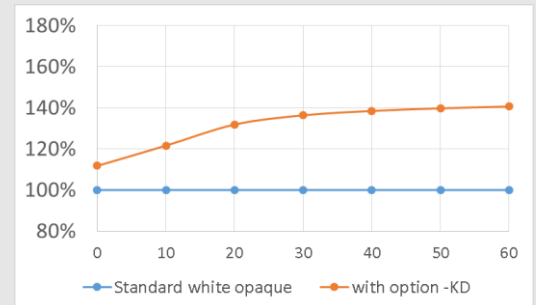
To increase the brightness:

- backlight for sub-band mounting
- top-lights for slightly shiny or matt Objects
- Dot grid of the light-guide recognizable

Brightness increase by approx. 40 %

(slightly different depending in size)

5 % surcharge
(on the basic price)



Option –LVF (light intensifying screen)

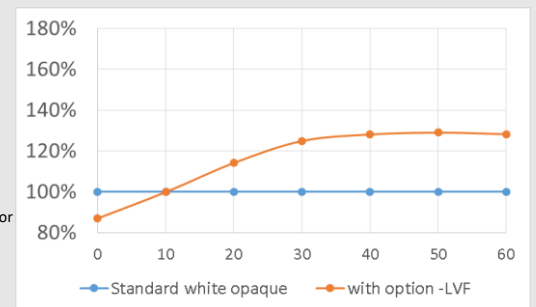
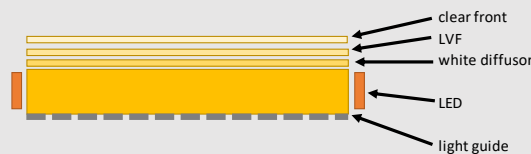
To increase the brightness:

- Top- lights for **highly shiny objects**
- Dot grid of the light-guide is not recognizable

Brightness increase by approx. 30 %

(slightly different depending in size)

20 % surcharge
(on the basic price)



Option –KD-LVF (light intensifying screen and clear cover plate)

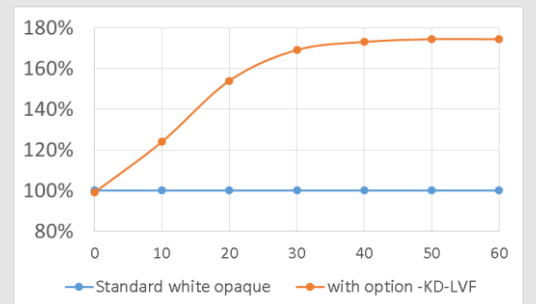
To increase the brightness:

- Top- lights for **slightly shiny and matt objects**
- Dot grid of the light-guide is recognizable

Brightness increase by approx. 75 %

(slightly different depending in size)

15 % surcharge
(on the basic price)



For more you need please ask for them:



+49 (0) 9364 8060-0



sales@planistar.de



Imprint

planistar Lichttechnik GmbH
 Wiesenweg 4
 97267 Himmelstadt, Germany
www.planistar.de

phone +49 9364 80600
 fax +49 9364 806029
 mail info@planistar.de

Managing director: Gerhard Karl
 commercial register: HRB 3933
 VAT-ID: DE132097491

Notes and description

All prices are retail prices for commercial customers plus freight + packaging + VAT.

We reserve the right to make technical changes to lights and accessories in terms of performance, dimensions, connection, mounting, etc., as we strive to continuously improve our products for our customers. Changes and errors are reserved.

All values in the tables and data sheets refer to the light colour white,
 without possible tolerances from suppliers and without guarantee.

Further use of the texts and pictures only with the express approval of planistar Lichttechnik GmbH.

Your personal contact person



Mr. Harald Gangl
 sales and technical advice

electrical engineers,
 electronics technician for power and microelectronics



+49 (0) 9364 8060-0



+49 (0) 177 8060011



hgangl@planistar.de



Mrs. Jasmin Wahler-Karl
 sales assistant

clerk for office communication



+49 (0) 9364 8060-0



sales@planistar.de